

REV	DATE	DESIGNER	CHECKED	REL No.	DESCRIPTION
1	25/06/2015	C.E	AS	-	INITIAL ISSUE
2	24/05/2018	JS	AS	-	SWL TYPO CORRECTED

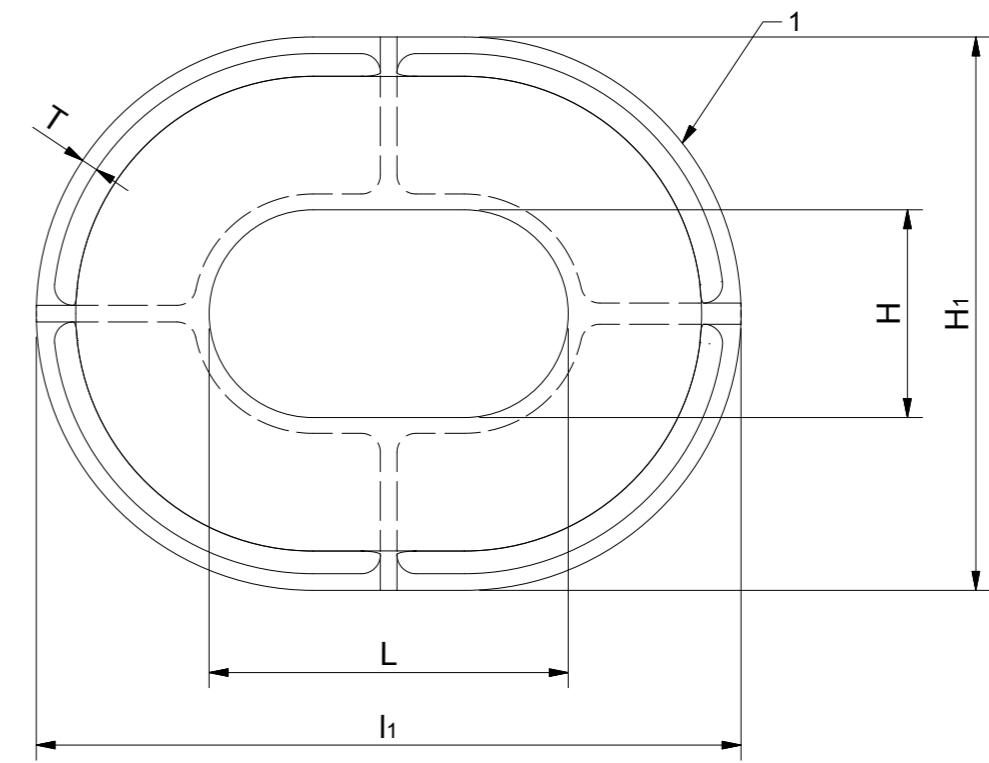
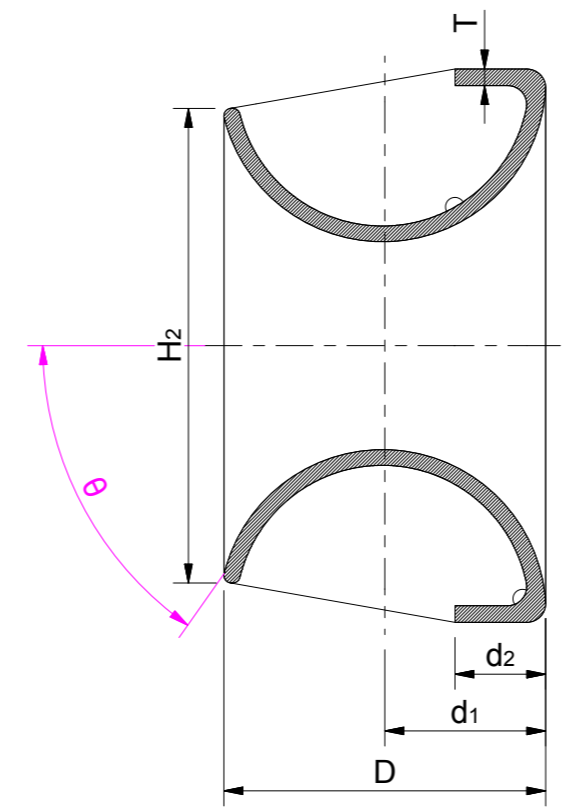
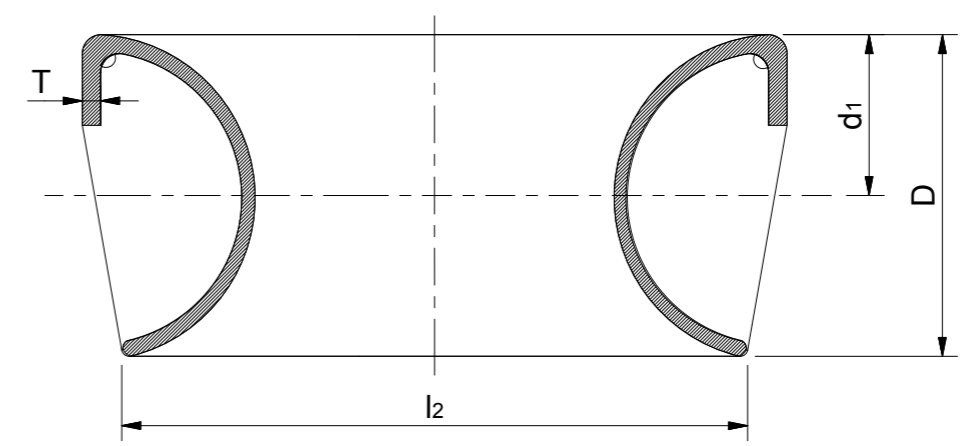
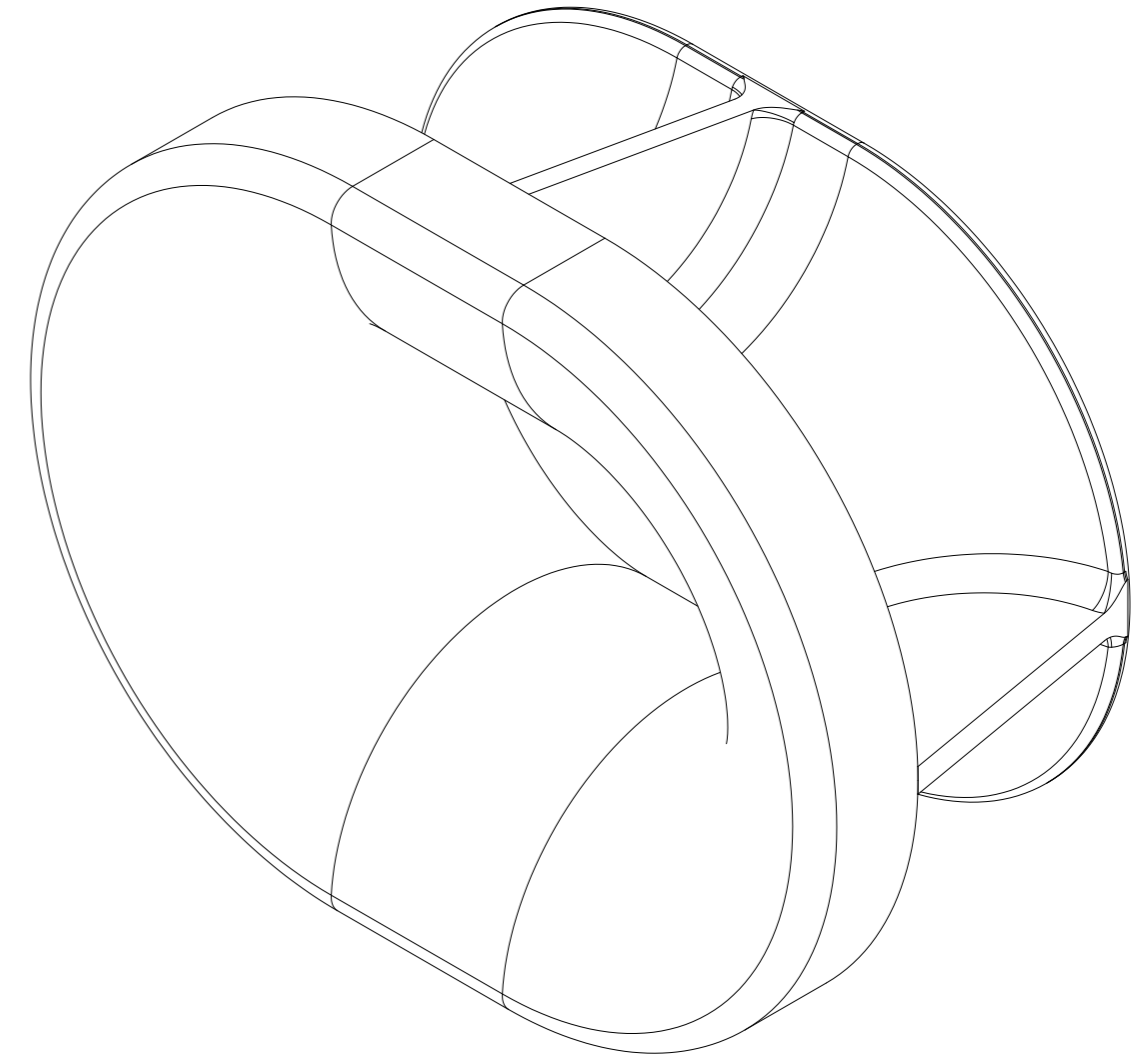
Nominal size L x H x D	l1	l2	H1	H2	d1	d2	T		Welding leg length ^a		SWL ^b		Wire rope diameter ^c (recommended)	Calculated weight ^d (kg)
									z1	z2	(kN)	(t)		
250x200x214	516	441	466	306	108	80	12	44°	6	5	226	23	18	49
300x250x286	638	554	588	410	144	100	16	44°	8	6.5	422	43	24	100
350x250x333	736	646	636	449	168	120	18	55°	9	7	549	56	28	141
400x250x381	834	736	684	450	192	120	20	47°	10	8	687	70	32	184
450x250x381	884	786	684	450	192	120	20	47°	10	8	706	72	32	194
500x250x381	934	836	684	450	192	120	20	47°	10	8	765	78	32	202
400x250x428	882	778	732	515	216	120	22	56°	10	9	883	90	36	264
450x250x428	932	828	732	515	216	120	22	56°	10	9	912	93	36	276
500x250x428	982	878	732	515	216	120	22	56°	10	9	932	95	36	288
500x400x428	982	878	882	665	216	120	22	56°	10	9	893	91	36	311
500x250x525A	1078	976	828	551	264	120	24	53°	10	9.5	1148	117	44	379
500x400x525A	1078	978	978	701	264	120	24	53°	10	9.5	1158	118	44	408
500x250x525B	1078	976	828	554	264	120	26	53°	10	10.5	1413	144	44	405
500x400x525B	1078	978	978	704	264	120	26	53°	10	10.5	1383	141	44	442

^a The welding method may be changed based on the same welding volume/strength

^b SWL's shown are for reference only. These are based on the loadings as mentioned in Annex A of ISO 13729:2012
"SWL" may be adjusted depending on the actual loading conditions, and the actual marking shall be agreed between the user and the manufacturer

^c The wire rope diameter (recommended) is only for reference based on the bending ratio of rope through the chock of 12 times.

^d The calculated weight is for reference only.



UNLESS OTHERWISE SPECIFIED
DIMENSIONS ARE IN MM

FRACT	DECIMALS	ANGLES
$\frac{1}{32}$	X, .X, .XX	$\pm 2^\circ$
	$\pm 2, \pm 40, \pm 0.10$	

COPYRIGHT FENDERCARE LIMITED
DIMENSIONS AND TOLERANCES PER ISO 8015:2011
REMOVE BURRS AND SHARP EDGES
ALL DIMS IN MILLIMETRES UNLESS OTHERWISE STATED
DO NOT SCALE DRAWING DO NOT PASS TO A THIRD PARTY

THIS DRAWING MAY CALL FOR THE USE OF PROCEDURES THAT MAY BE INJURIOUS TO HEALTH IF ADEQUATE PRECAUTIONS ARE NOT TAKEN. IT REFERS ONLY TO TECHNICAL SUITABILITY AND DOES NOT ABSOLVE THE USER FROM LEGAL OBLIGATIONS RELATING TO HEALTH AND SAFETY AT ANY STAGE

FENDERCARE
marine

ENTERPRISE HOUSE HARVEYS LANE
SEETHING NORFOLK NR15 1EN ENGLAND
TEL +441508 483705 FAX +441508 482710
EMAIL: sales@fendercare.com

MATERIAL:	Steel		
FINISH:	BLAST TO Sa2.5 & PRIME UNLESS STATED OTHERWISE		
ESTIMATED MASS:	N/A		
DRAWN:	C.E	SCALE:	NTS
CHECKED:	AS	DATE:	25/06/2015

TITLE:
ISO 13729, TYPE B - VARIOUS SIZES, BULWARK CHOCK - 4 RIB - SALES DRAWING

SHEET: DRAWING No:
1 OF 1 **42350** Issue: 2 A2

3RD ANGLE PROJECTION