

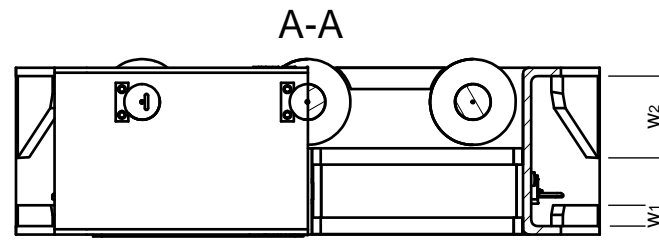
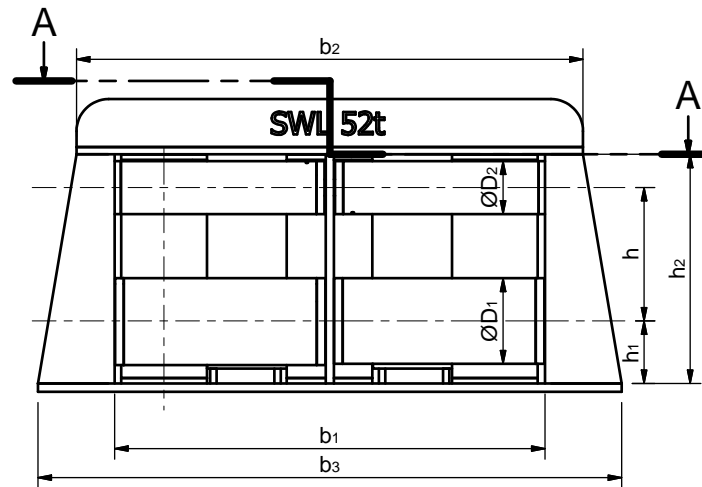
Nominal Size Dn	BxH	D <sub>1</sub>	D <sub>2</sub>	h	h <sub>1</sub>	h <sub>2</sub>	b	b <sub>1</sub>	b <sub>2</sub>	b <sub>3</sub>	c	e	w <sub>1</sub>	w <sub>2</sub>	SWL <sup>c</sup>	
															(kN)	(t)
140	195x150	139.8	114.3	277	130	480	335	515	656	820	150	70	30	100	137	14
160	200x150	165.2	114.3	290	145	515	365	570	730	920	175	83	40	100	196	20
180	200x150	190.7	139.8	315	155	560	391	620	800	1000	200	95	40	100	245	25
200	200x150	216.3	139.8	328	170	590	416	675	886	1110	225	108	50	100	314	32
250	250x200	267.4	165.2	416	195	715	517	825	1046	1270	280	133	65	200	510	52
300A	300x250	318.5	216.3	517	220	870	618	980	1206	1480	330	159	80	200	687	70
300B	300x250	318.5	216.3	517	220	870	618	980	1206	1480	330	159	80	200	736	75
400A	350x250	406.4	216.3	561	265	960	756	1210	1450	1750	420	203	100	200	981	100
400B	350x250	406.4	216.3	561	265	960	756	1210	1450	1750	420	203	100	200	1256	128
400C	350x250	406.4	216.3	561	265	960	756	1210	1450	1750	420	203	100	200	1373	140

- <sup>a</sup> Welding with chamfering is available based on the same welding volume/strength.
- <sup>b</sup> Welding otherwise mentioned in the figured in this International Standard and in this table: minimum leg length is to be ½ of the thinner plate thickness.
- <sup>c</sup> The SWL is the maximum applicable rope tension.

The SWLs shown in this table are for reference only. These are based on the loadings as mentioned in Annex A.

The "SWL" may be adjusted depending on the actual loading conditions, and the actual marking shall be agreed between the used and the manufacturer.

<sup>d</sup> The calculated weight is for reference only excluding foundation



REV	DATE	DRAWN	CHECK	REL No.	DESCRIPTION
1	10/11/2015	C.E	JS	-	INITIAL ISSUE

UNLESS OTHERWISE SPECIFIED  
DIMENSIONS ARE IN MM

FRACT	DECIMALS	ANGLES
$\frac{1}{32}$	X. ±2	X ±0.10
	.XX ±0.10	±2°

COPYRIGHT FENDERCARE LIMITED  
DIMENSIONS AND TOLERANCES PER ISO 8015:2011  
REMOVE BURRS AND SHARP EDGES  
ALL DIMS IN MILLIMETRES UNLESS OTHERWISE STATED  
DO NOT SCALE DRAWING DO NOT PASS TO A THIRD PARTY

THIS DRAWING MAY CALL FOR THE USE OF PROCEDURES THAT MAY BE INJURIOUS TO HEALTH IF ADEQUATE PRECAUTIONS ARE NOT TAKEN. IT REFERS ONLY TO TECHNICAL SUITABILITY AND DOES NOT ABSOLVE THE USER FROM LEGAL OBLIGATIONS RELATING TO HEALTH AND SAFETY AT ANY STAGE

**fendercare**  
marine

ENTERPRISE HOUSE HARVEYS LANE  
SEETHING NORFOLK NR15 1EN ENGLAND  
TEL +441508 483705 FAX +441508 482710  
EMAIL: sales@fendercare.com

MATERIAL:	N/A		
FINISH:	BLAST TO Sa2.5 & PAINT WITH SUITABLE PRIMER		
ESTIMATED MASS:	N/A		
DRAWN:	C.E	SCALE:	NTS
CHECKED:	JS	DATE:	10/11/2015

TITLE:  
**ISO 13733 - 7 ROLLER MAF - SALES DRAWING**

SHEET:	DRAWING No:		
1 OF 1	<b>47192</b>	<b>Issue: 1</b>	A3

3RD ANGLE PROJECTION