

REV	DATE	DESIGN	CHECK	REL No.	DESCRIPTION
1	25/06/2015	C.E	AS	-	INITIAL ISSUE

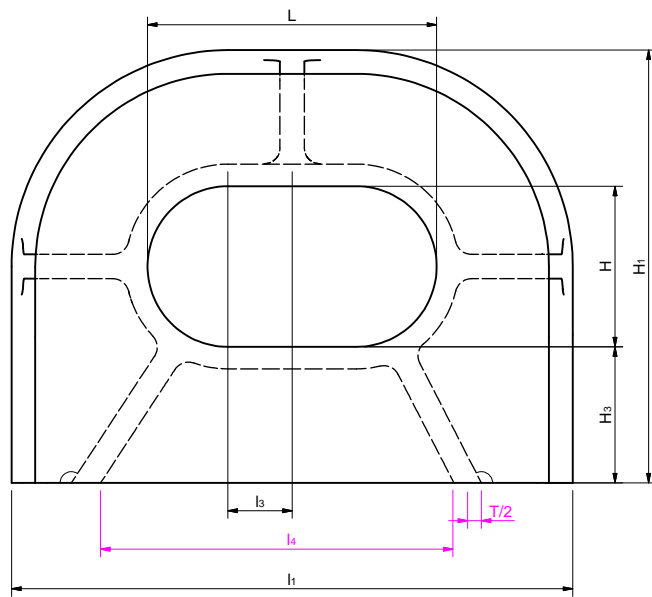
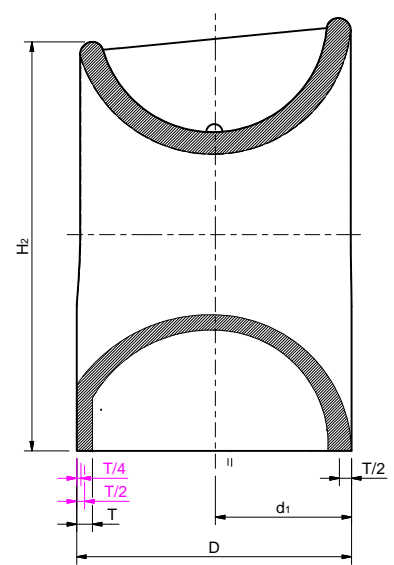
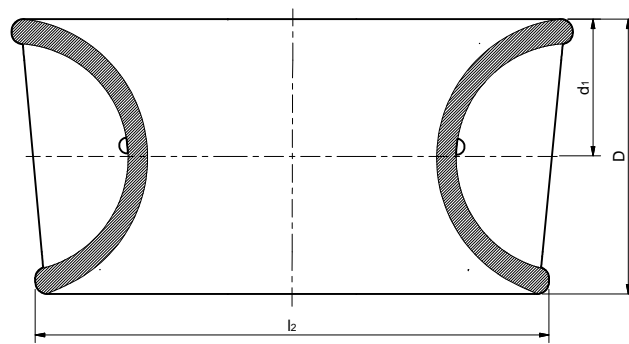
Nominal size L x H x D	l ₁	l ₂	l ₃	l ₄	H ₁	H ₂	H ₃	d1	T	Weldin g leg length?	SWL?		Wire rope diameter? (recommende d)	Calcula ted weight ?
											(kN)	(t)		
250x200x214	488	453	76	265	427	368	108	108	22	6	226	23	18	73
300x250x286	614	565	89	330	551	481	144	144	26	6.5	422	43	24	142
350x250x333	716	660	114	403	601	525	168	168	30	7.5	549	56	28	222
400x250x381	820	754	139	475	652	553	194	192	36	9	687	70	32	310
450x250x381	870	804	164	524	652	553	194	192	36	9	706	72	32	322
500x250x381	920	854	189	574	652	553	194	192	36	9	765	78	32	337
400x250x428	870	796	139	500	701	609	216	216	38	9.5	883	90	36	434
450x250x428	920	846	164	550	701	609	216	216	38	9.5	912	93	36	452
500x250x428	970	896	189	600	701	609	216	216	38	9.5	932	95	36	472
500x400x428	970	896	176	600	851	759	216	216	38	9.5	893	91	36	528
500x250x525A	1068	1000	190	652	798	675	264	264	40	10	1148	117	44	657
500x400x525A	1068	1000	193	652	948	825	264	264	40	10	1158	118	44	724
500x250x525B	1074	1000	176	652	801	680	264	264	46	11.5	1413	144	44	753
500x400x525B	1074	1000	179	652	951	830	264	264	46	11.5	1383	141	44	825

^a The welding method may be changed based on the same welding volume/strength

^b SWL's shown are for reference only. These are based on the loadings as mentioned in Annex A of ISO 13729:2012 "SWL" may be adjusted depending on the actual loading conditions, and the actual marking shall be agreed between the user and the manufacturer

^c The wire rope diameter (recommended) is only for reference based on the bending ration of rope through the chock of 12 times.

^d The calculated weight is for reference only.



UNLESS OTHERWISE SPECIFIED DIMENSIONS ARE IN MM

FRACT	DECIMALS	ANGLES
$\frac{1}{32}$	X ±2	XX ±2°

COPYRIGHT FENDERCARE LIMITED
DIMENSIONS AND TOLERANCES PER ISO 8015:2011
REMOVE BURRS AND SHARP EDGES
ALL DIMS IN MILLIMETRES UNLESS OTHERWISE STATED
DO NOT SCALE DRAWING DO NOT PASS TO A THIRD PARTY

THIS DRAWING MAY CALL FOR THE USE OF PROCEDURES THAT MAY BE INJURIOUS TO HEALTH IF ADEQUATE PRECAUTIONS ARE NOT TAKEN. IT REFERS ONLY TO TECHNICAL SUITABILITY AND DOES NOT ABSOLVE THE USER FROM LEGAL OBLIGATIONS RELATING TO HEALTH AND SAFETY AT ANY STAGE.

FENDERCARE
marine

ENTERPRISE HOUSE HARVEYS LANE
SEETHING NORFOLK NR15 1EN ENGLAND
TEL +441508 483705 FAX +441508 482710
EMAIL: sales@fendercare.com

MATERIAL: Steel

FINISH: BLAST TO Sa2.5 & PRIME UNLESS STATED OTHERWISE

ESTIMATED MASS: N/A

DRAWN:	C.E	SCALE:	NTS
CHECKED:	AS	DATE:	25/06/2015

TITLE:
ISO 13729, TYPE A - VARIOUS SIZES, DECK CHOCK - 5 RIB - SALES DRAWING

SHEET: DRAWING No:
1 OF 1 **42353** Issue: 1 A2

3RD ANGLE PROJECTION